



# GC CAPILLARY COLUMN

## APPLICATIONS: High-Temp Aluminum Clad

*Canadian  
Wax*

**COLUMN:** 400-1HT, Dimethylpolysiloxane - Aluminum-Clad

15M. x 0.25mm I.D. x 0.1 $\mu$ m film  
Cat. No.: 400-1HT-15-0.1F

**Temperature:** 60° (15°/min.) - 400°C

**Injector:** 60° - 400°C, PTV Injector, 1 $\mu$ L

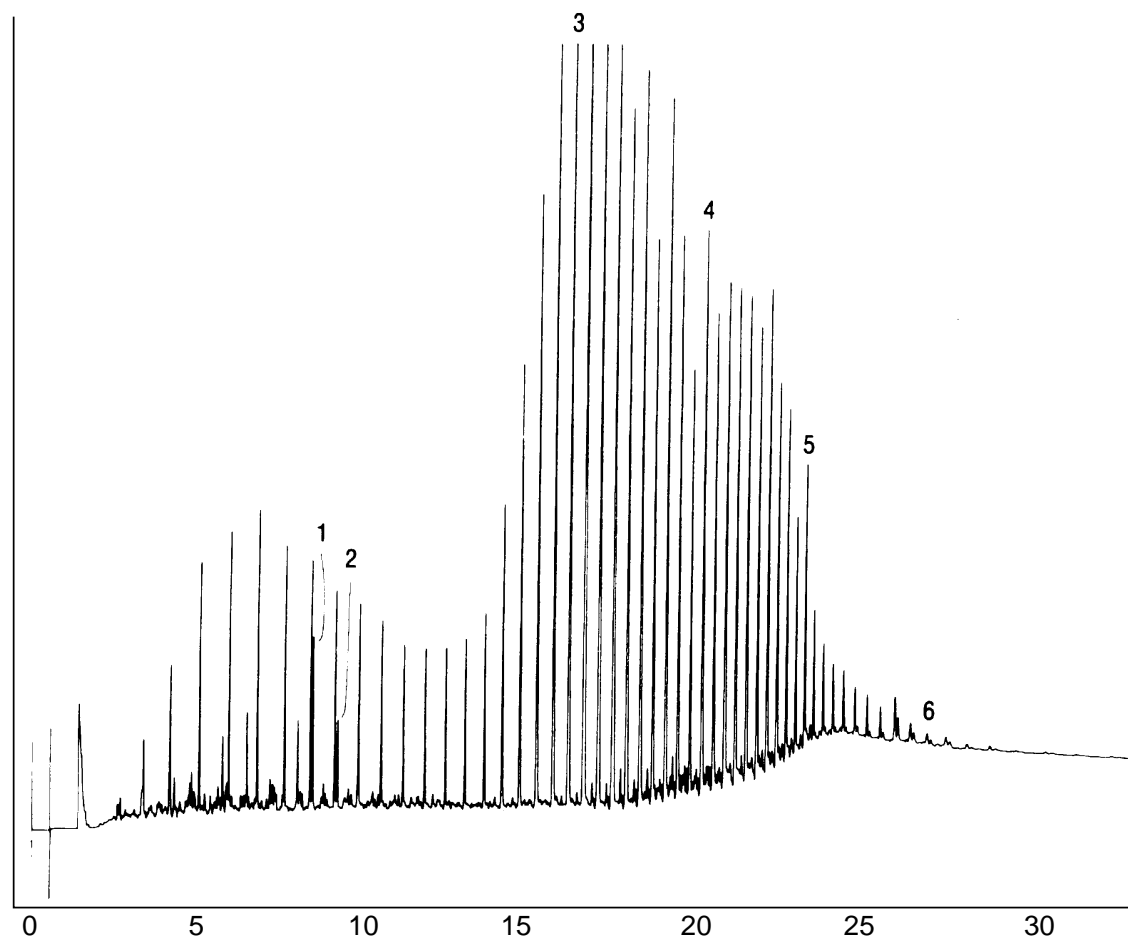
**Detector:** 400°C, FID

**Carrier Gas:** 31 cm/sec., Helium

1. pristane  
2. phytane

3. C-30  
4. C-40

5. C-50  
6. C-60



**QUADREX**



PO Box 3881, Woodbridge, CT 06525 • (203) 393-3112 • FAX (203) 393-0391  
TOLLFREE: 800-275-7033 • E-MAIL: tech@quadrexcorp.com • WEB: www.quadrexcorp.com