



GC CAPILLARY COLUMN APPLICATIONS: **Clinical/Toxicological**

Blood Alcohols

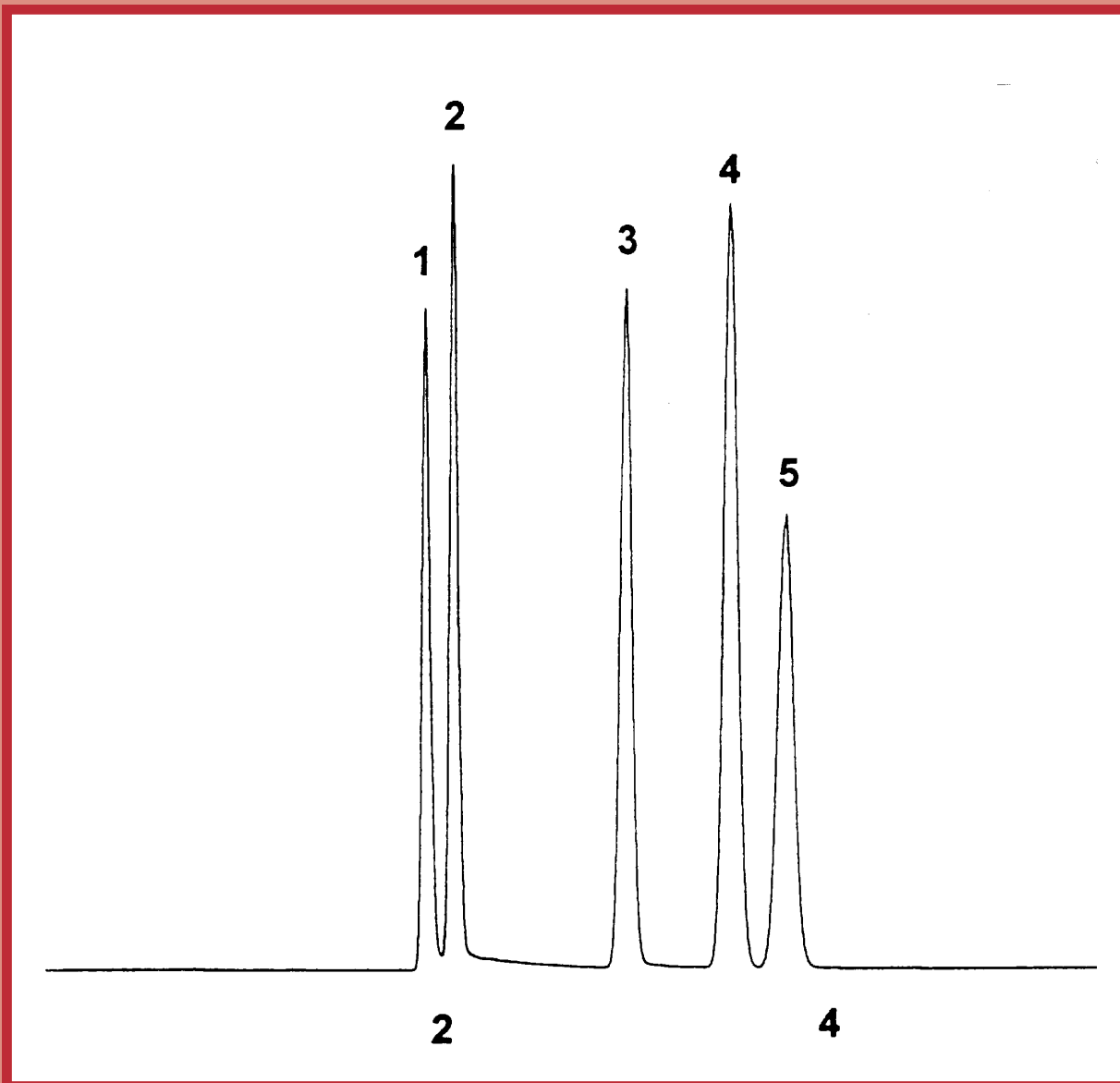
Column: 007-1, Bonded Dimethylpolysiloxane
30M. x 0.32mm I.D. x 10.0µm film
Cat. No.: 007-1-30W-10.0F

Temperature: 40° (3 min. hold) (12°/min.) -200°C
Injector: 200°C
Detector: 250°C, FID
Carrier: 40 cm/sec., Helium

1. caffeine
2. methadone
3. cocaine

1. acetaldehyde
2. methanol
3. ethanol

4. acetone
5. isopropanol



QUADREX



PO Box 3881, Woodbridge, CT 06525 • (203) 393-3112 • FAX (203) 393-0391
TOLLFREE: 800-275-7033 • E-MAIL: tech@quadrexcorp.com • WEB: www.quadrexcorp.com