



# GC CAPILLARY COLUMN

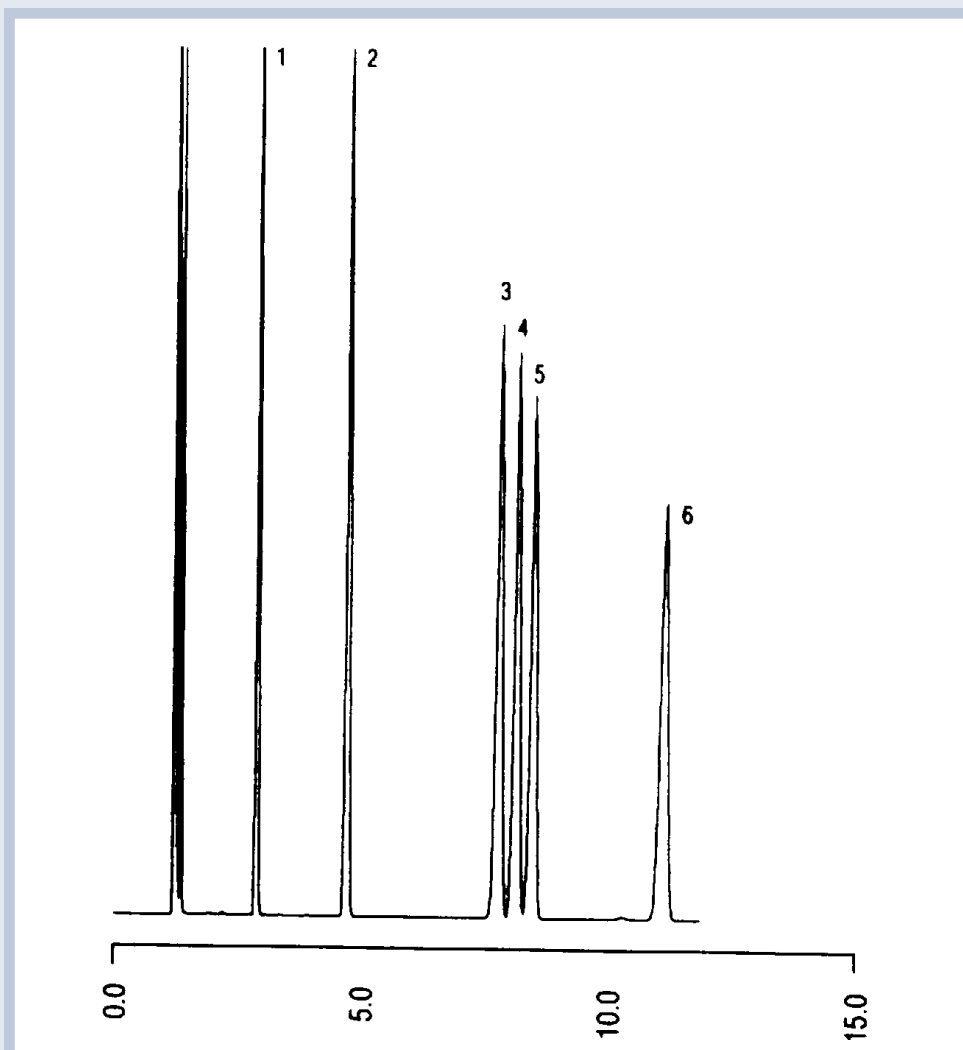
## APPLICATIONS: Ultra Alloy™ Stainless Steel

**BTEX**

**COLUMN:** UAC-CW, Carbowax  
50M. x 0.50mm I.D. x 1.0µm film  
Cat. No.: UAC-CW-50V-1.0F

**Temperature:** 60°C  
**Carrier Gas:** H<sub>2</sub>  
**Split Vent Flow:** 100 ml/min.  
**Injection:** 0.1µL

1. benzene	3. ethylbenzene	5. m-xylene
2. toluene	4. p-xylene	6. o-xylene



**QUADREX**

PO Box 3881, Woodbridge, CT 06525 • (203) 393-3112 • FAX (203) 393-0391  
TOLLFREE: 800-275-7033 • E-MAIL: tech@quadrexcorp.com • WEB: www.quadrexcorp.com

