

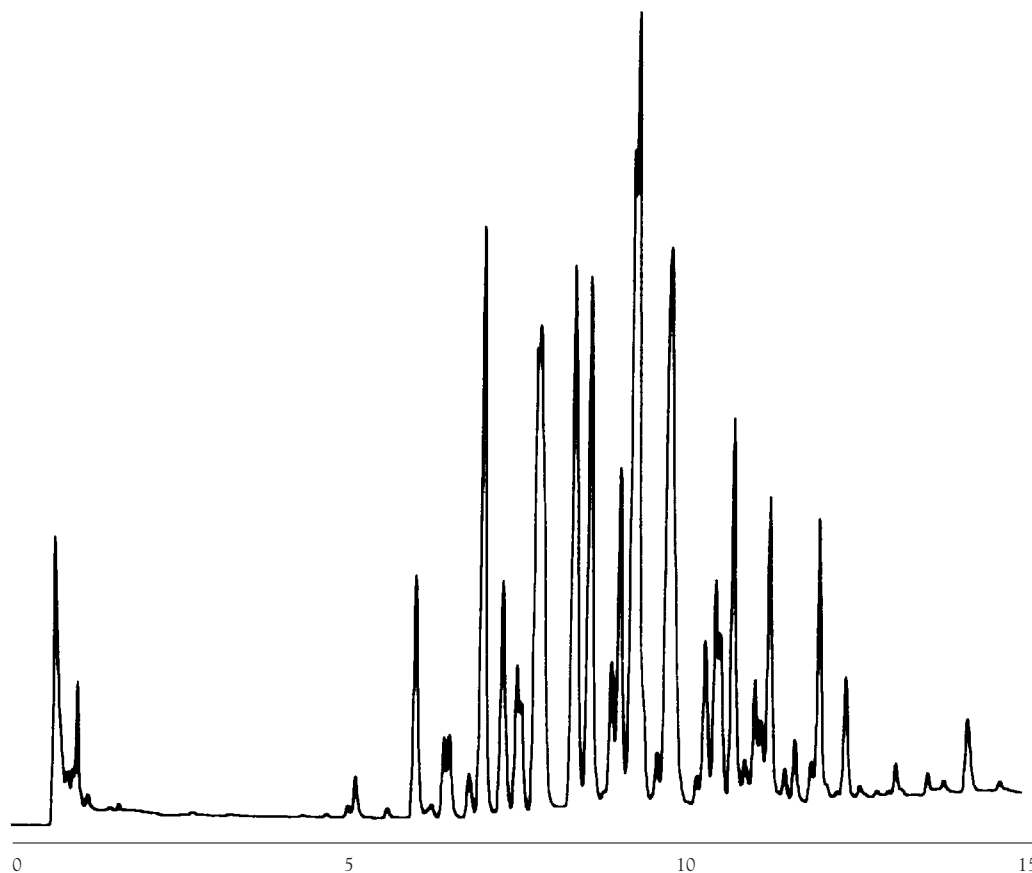


GC CAPILLARY COLUMN APPLICATIONS: Environmental

**Aroclor
1248**

COLUMN: 007-608, Cyanopropyl Phenyl
Methylpolysiloxane
30M. x 0.53mm I.D. x 0.8 μ m film
Cat. No.: 007-608-30V-0.8F

Temperature: 140° (8°/min.) - 260°C
Injector: 240°C
Detector: 300°C, ECD
Carrier Gas: 10.5 ml/min., Helium



QUADREX



PO Box 3881, Woodbridge, CT 06525 • (203) 393-3112 • FAX (203) 393-0391
TOLLFREE: 800-275-7033 • E-MAIL: tech@quadrexcorp.com • WEB: www.quadrexcorp.com