



GC CAPILLARY COLUMN

APPLICATIONS: **Clinical/ Toxicological**

Antidepressants

COLUMN: 007-1701, (14% Cyanopropylphenyl) Methylpolysiloxane
30M. x 0.25mm I.D. x 0.25 μ m film
Cat. No.: 007-1701-30-0.25F

Temperature: 120°(20°/min.) - 200° - (10°/min.) - 290°C

Injector: 250°C

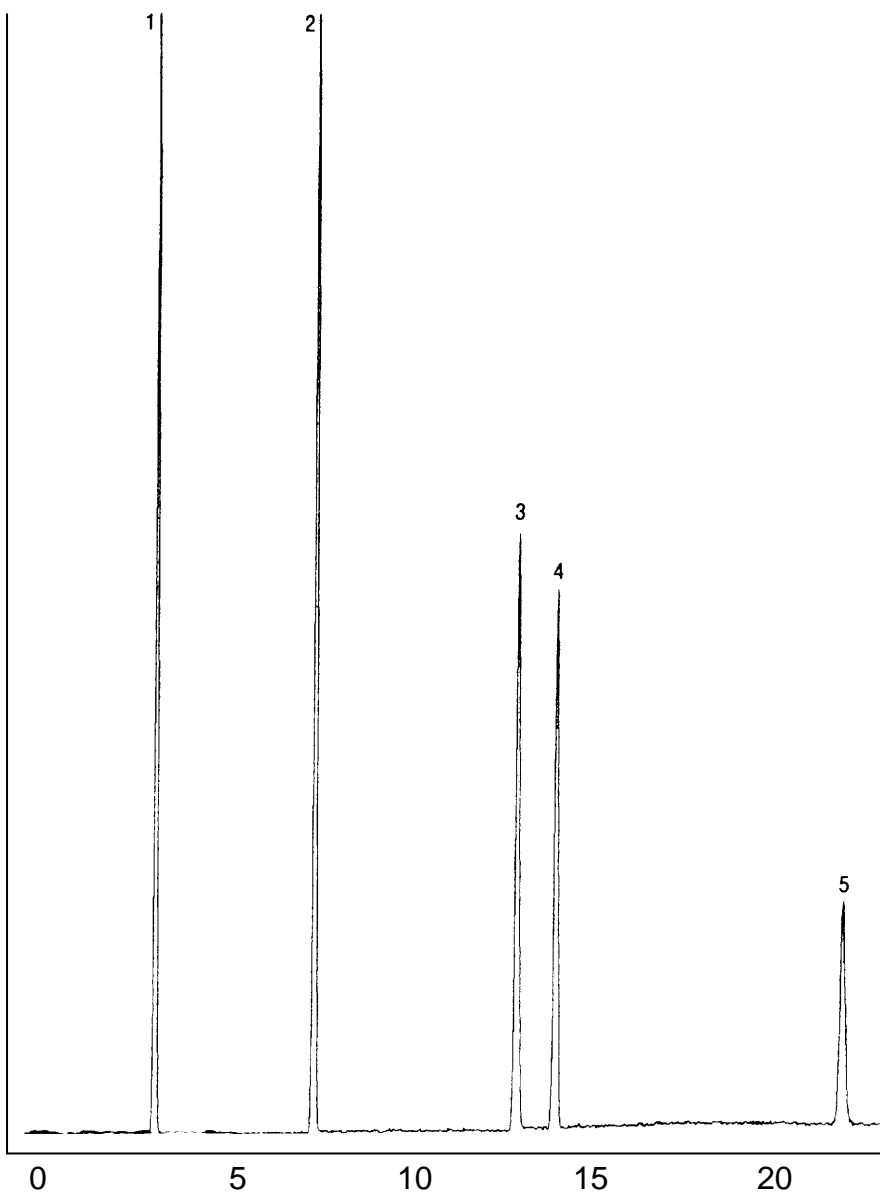
Detector: MSD

Carrier Gas: 31 cm/sec., Helium

1. Glutethimide
2. Methaqualone

3. Diazepam (Valium)
4. Chlorpromazine

5. Flurazepan



QUADREX



PO Box 3881, Woodbridge, CT 06525 • (203) 393-3112 • FAX (203) 393-0391
TOLLFREE: 800-275-7033 • E-MAIL: tech@quadrexcorp.com • WEB: www.quadrexcorp.com