



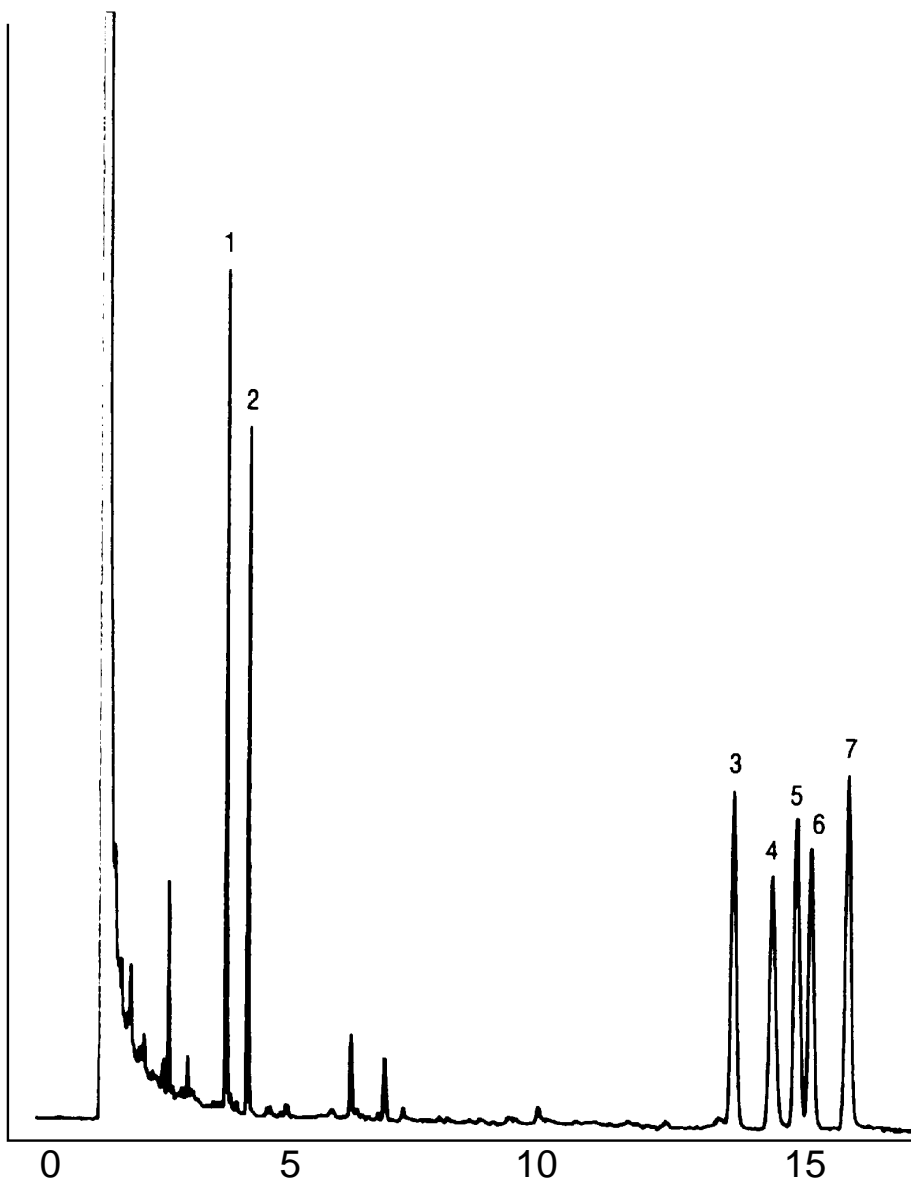
GC CAPILLARY COLUMN APPLICATIONS: **Clinical/ Toxicological**

Antidepressants

COLUMN: 007-5* (5% Phenyl) Methylpolysiloxane
25M. x 0.25mm I.D. x 0.25µm film
Cat. No.: 007-5-25-0.25F

Temperature: 150° (6°/min.) - 285°C
Injector: 230°C
Detector: 300°C, FID
Carrier Gas: 34 cm/sec., Helium

- | | | |
|---------------------|------------------|------------------|
| 1. Hydroxyphenamate | 4. Amitriptyline | 7. Protriptyline |
| 2. Meprobamate | 5. Doxepin | |
| 3. Nortriptyline | 6. Imipramine | |



QUADREX



PO Box 3881, Woodbridge, CT 06525 • (203) 393-3112 • FAX (203) 393-0391
TOLLFREE: 800-275-7033 • E-MAIL: tech@quadrexcorp.com • WEB: www.quadrexcorp.com