



# GC CAPILLARY COLUMN

## APPLICATIONS: **Clinical/ Toxicological**

### *Anticonvulsant Drugs*

**COLUMN:** 007-5,\* (5% Phenyl) Methylpolysiloxane  
25M. x 0.25mm I.D. x 0.25µm film  
Cat. No.: 007-5-25-0.25F

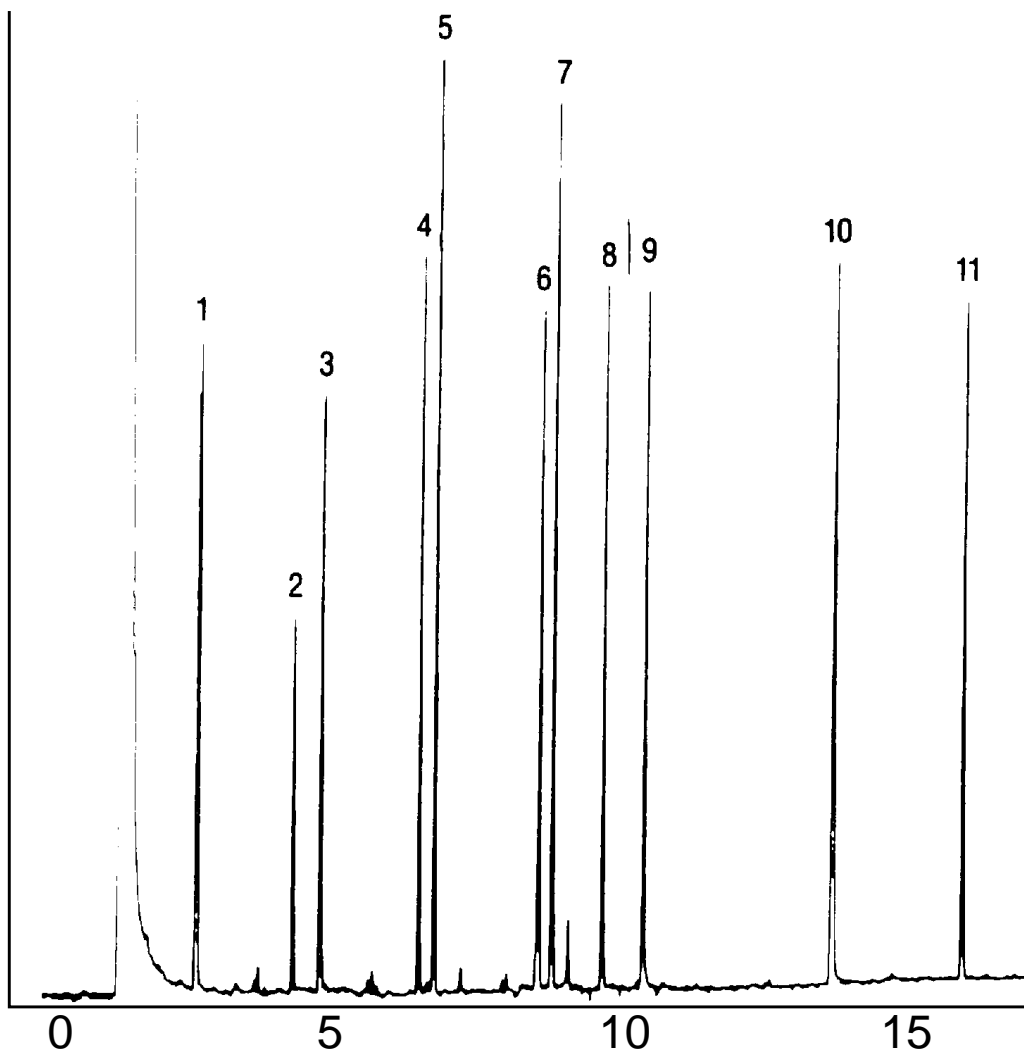
Temperature: 140° (1 min. hold) (10°/min.) - 260°C

Injector: 230°C

Detector: 300°C, FID

Carrier Gas: 30 cm/sec, Helium

- |                 |                       |
|-----------------|-----------------------|
| 1. Ethosuximide | 7. Ethotoin           |
| 2. Metharbital  | 8. Mephobarbital      |
| 3. Barbital     | 9. Phenobarbital      |
| 4. Methsuximide | 10. Primidone         |
| 5. Phensuximide | 11. Diazepam (Valium) |
| 6. Mephenytoin  |                       |



**QUADREX**



PO Box 3881, Woodbridge, CT 06525 • (203) 393-3112 • FAX (203) 393-0391  
TOLLFREE: 800-275-7033 • E-MAIL: tech@quadrexcorp.com • WEB: www.quadrexcorp.com