



# GC CAPILLARY COLUMN APPLICATIONS: **Clinical/ Toxicological**

## *Anesthetics*

**COLUMN:** 007-5\* (5% Phenyl) Methylpolyloxane  
25M. x 0.25mm I.D. x 0.25 $\mu$ m film  
Cat. No.: 007-5-25-0.25F

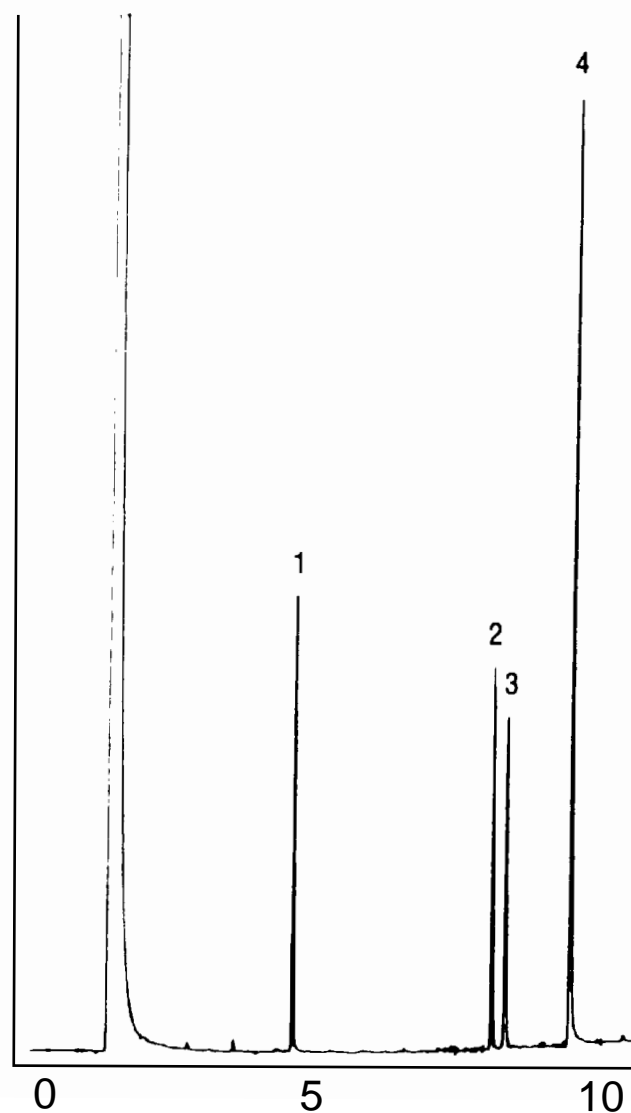
**Temperature:** 150° (6°/min.) - 285°C

**Injector:** 230°C

**Detector:** 300°C, FID

**Carrier Gas:** 29 cm/sec, Helium

- |                  |                 |
|------------------|-----------------|
| 1. Benzocaine    | 6. Mepivocaine  |
| 2. Proparacaine  | 7. Tetracaine   |
| 3. Prilocaine    | 8. Pramoxine    |
| 4. Lidocaine     | 9. Propoxycaine |
| 5. Phencyclidine | 10. Dibucaine   |



**QUADREX**



PO Box 3881, Woodbridge, CT 06525 • (203) 393-3112 • FAX (203) 393-0391  
TOLLFREE: 800-275-7033 • E-MAIL: [tech@quadrexcorp.com](mailto:tech@quadrexcorp.com) • WEB: [www.quadrexcorp.com](http://www.quadrexcorp.com)