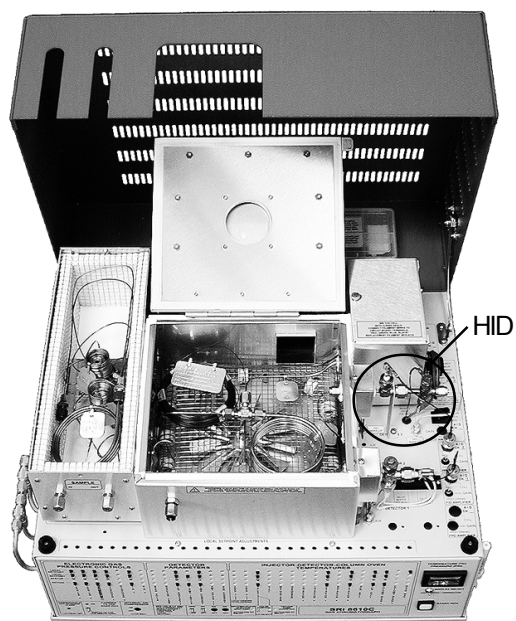


DETECTORS

Helium Ionization Detector - HID

Overview

The Helium Ionization Detector is a universal detector, responding to all molecules except neon. It requires only helium carrier and make-up gas, and is sensitive to the low ppm range. The HID is particularly useful for volatile inorganics to which the FID and other selective detectors will not respond, like NO_x , CO , CO_2 , O_2 , N_2 , H_2S and H_2 . It is a robust detector that, unlike the TCD, has no filaments to burn out. The SRI HID consists of a detector body, a collector electrode, an arc electrode assembly, and a thermostatted heater block which can be heated to 375°C . In SRI GCs, the HID is mounted on the right-hand side of the Column Oven.

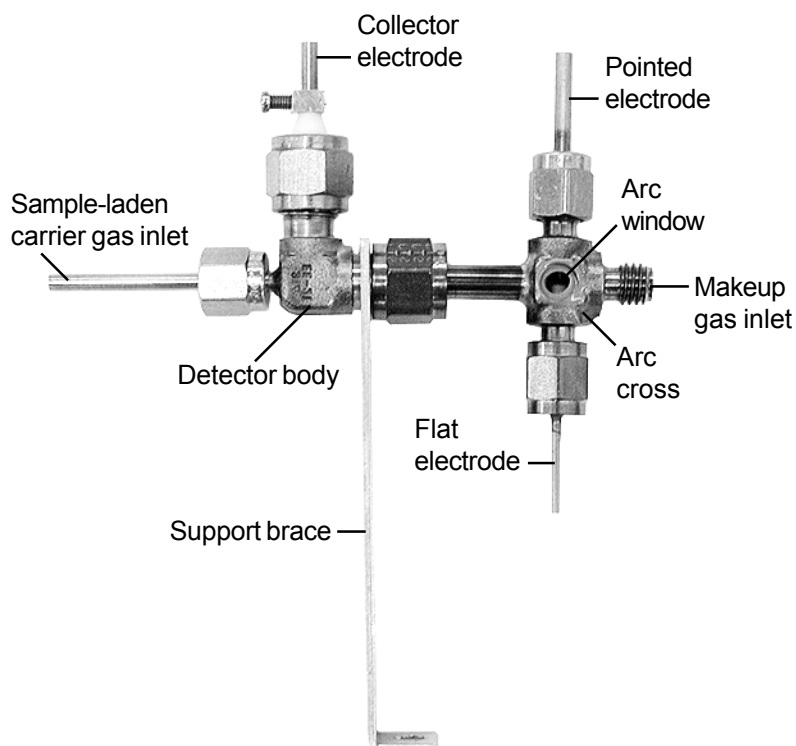


HID detector between TCD and FID detectors on an SRI GC

Close-up of the same HID detector



HID detector removed from GC and heater block

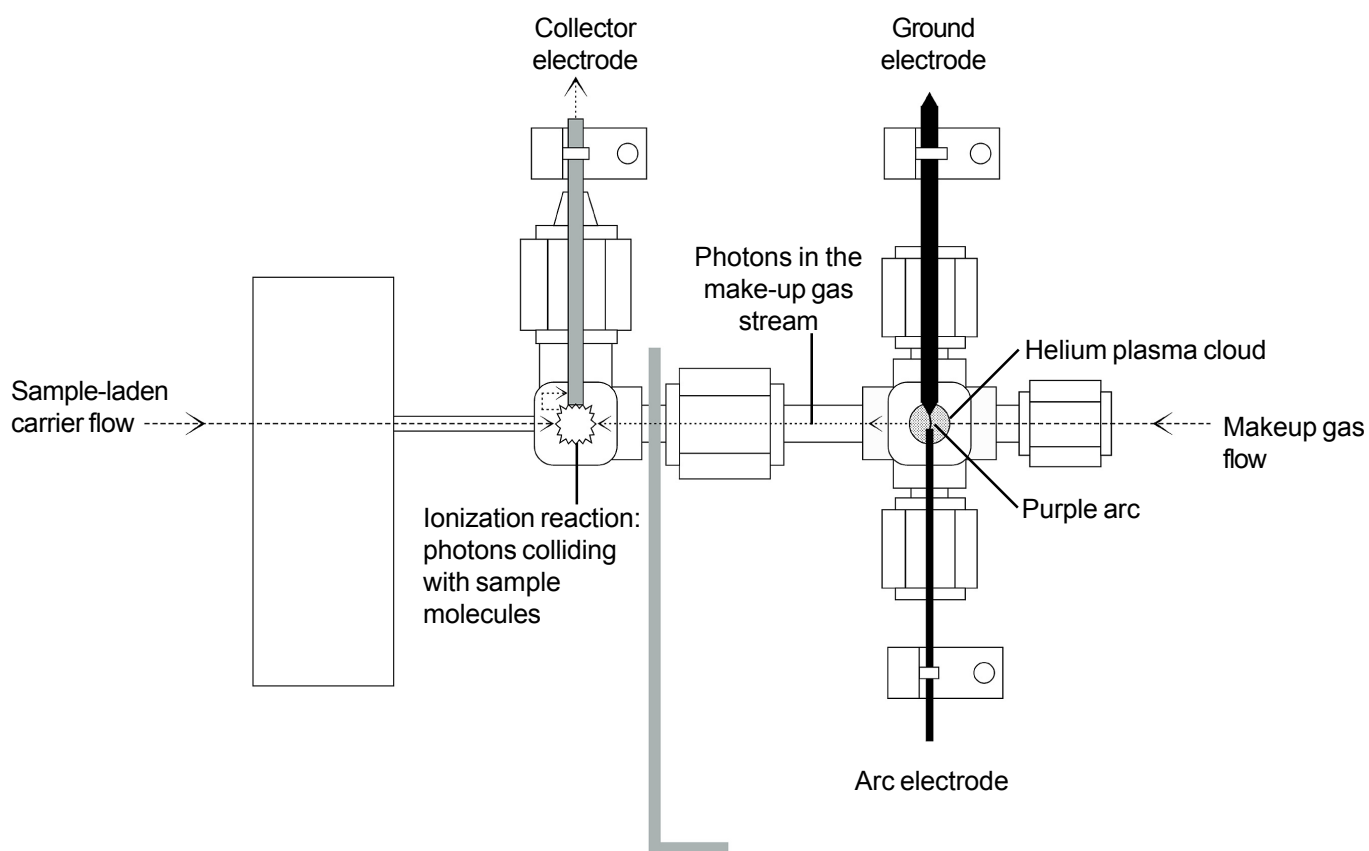


DETECTORS

HID - Helium Ionization Detector

Theory of Operation

The SRI HID detector uses two electrodes which support a low current arc through the helium make-up gas flow. The helium molecules between the electrodes are elevated from ground state to form a helium plasma cloud. As the helium molecules collapse back to ground state, they give off a photon. The sample molecules are ionized when they collide with these photons. All compounds having an ionization potential lower than 17.7eV are ionized upon contact with photons from the helium cloud. The ionized component molecules are then attracted to a collector electrode, amplified, and output to the PeakSimple data system.

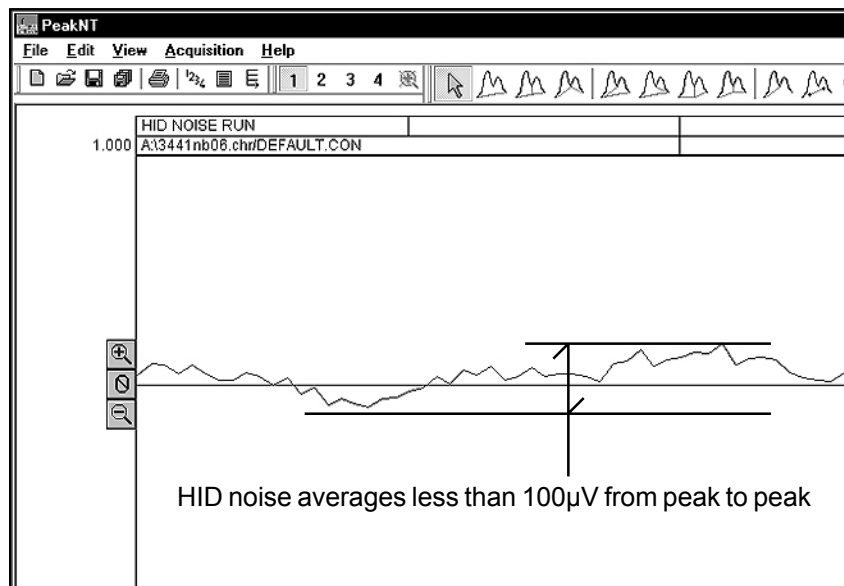


NOTE: If the arc electrode is covered with Teflon™ (translucent) insulation, it should leave 1mm of its tip exposed. If the flat electrode is covered with ceramic (white) insulation, then the tip should be flush with the edge of the insulation sleeve. There should be a 1-2mm gap between the arc electrodes, and this gap should be centered in the arc cross.

DETECTORS

Helium Ionization Detector - HID

Expected Performance



HID noise run

Columns: 1m Mol. Sieve, 2m Hayesep-D
 Carrier: Helium @ 10mL/min
 HID gain = HIGH
 HID current = 70
 HID temp = 200°C

Temperature Program:
 Initial Hold Ramp Final
 80°C 15.00 0.00 80°C

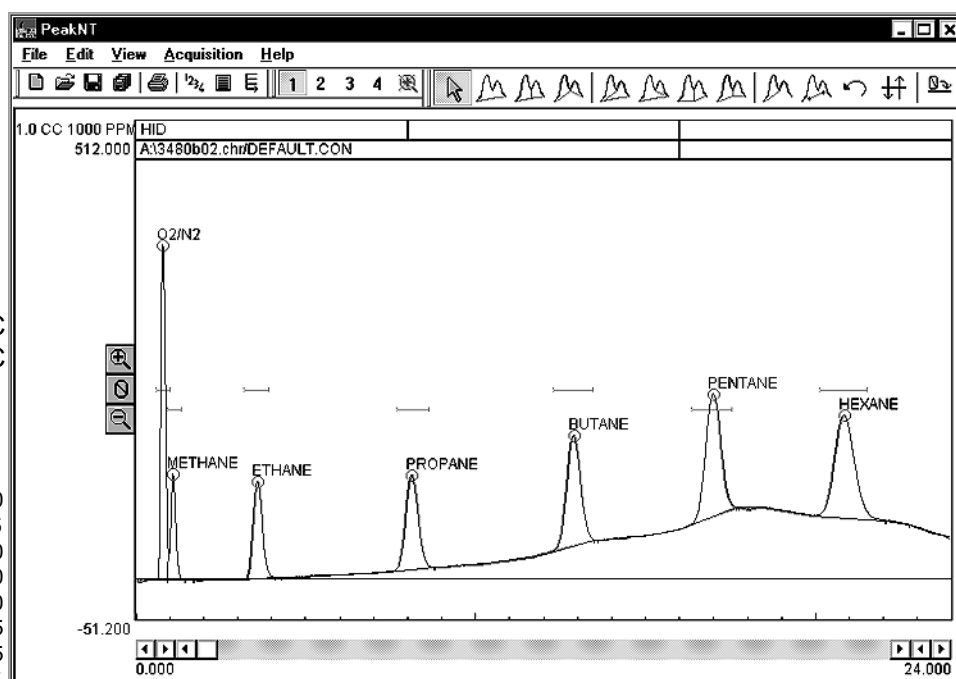
Test Analysis of 1cc 1000ppm C₁-C₆

Method: valve injection
 Column: 1m (3') Silica Gel
 Carrier: Helium @ 10mL/min
 HID gain = HIGH
 HID temp = 150°C
 HID make-up = 29psi @
 40mL/min

Temperature program:
 Initial Hold Ramp Final
 50°C 1.00 10.00 220°C
 220°C 10.00 0.00 220°C

Results:

Component	Retention	Area
O2/N2	0.766	3350.0970
Methane	1.066	1163.1965
Ethane	3.550	2161.0940
Propane	8.083	3001.6200
Butane	12.850	3958.3250
Pentane	16.950	4849.9755
Hexane	20.800	5023.0105
total		23507.3185



DETECTORS

HID - Helium Ionization Detector

General Operating Procedure

1. Set the HID amplifier gain switch to HIGH for most applications from the ppm level to 1%. Use the MEDIUM gain setting for slightly more concentrated samples.
2. Set the helium make-up gas flow to 40mL/min, and the helium carrier gas flow to 10mL/min. The make-up gas flow is critical to the HID's performance. With insufficient make-up flow, the chlorinated peaks will be inverted on the chromatogram; see the chromatograms compared on the **HID Make-up Gas Flow** page. Clean, high purity helium is best; moisture, air, and other contaminants can cause problems.
3. Set the HID temperature to 200°C. This temperature will help prevent moisture accumulation in the detector's arc assembly.
4. Zero the data system signal, then switch ON the HID current; the switch is located on the GC's front control panel under "DETECTOR PARAMETERS." Set the HID current at 100 using the trimpot setpoint on the top edge of the front control panel.
5. When the HID is OFF and the signal zeroed, and the HID is then turned ON, the milliVolt offset at HIGH gain setting should be 200-800mV. A higher offset means more sensitivity, but less dynamic range. If the offset is less than 200, the arc and ground electrodes are probably too close.
6. Observe the arc window; if you can see the purple arc between the ground and arc electrodes, proceed to step 7. If the arc goes sideways to the detector body instead of down to the ground electrode, then the gap between the electrodes is too large. If you cannot see the arc,
 - A. Use a multimeter to check the voltage between the arc and ground electrodes. With the HID current at 100, the voltage reading should be greater than 200VDC (our readings average around 240VDC).
 - B. Look through the arc window at the arc and ground electrodes. If they appear to be touching, disconnect the red electrode lead wire then check the continuity between the electrodes using a multimeter; the reading should be open or infinite.
 - C. If the continuity between the electrodes is not open, re-gap the electrodes.
7. Let the milliVolt reading stabilize, then begin the analytical run.

DETECTORS

Helium Ionization Detector - HID

HID Make-up Gas Flow

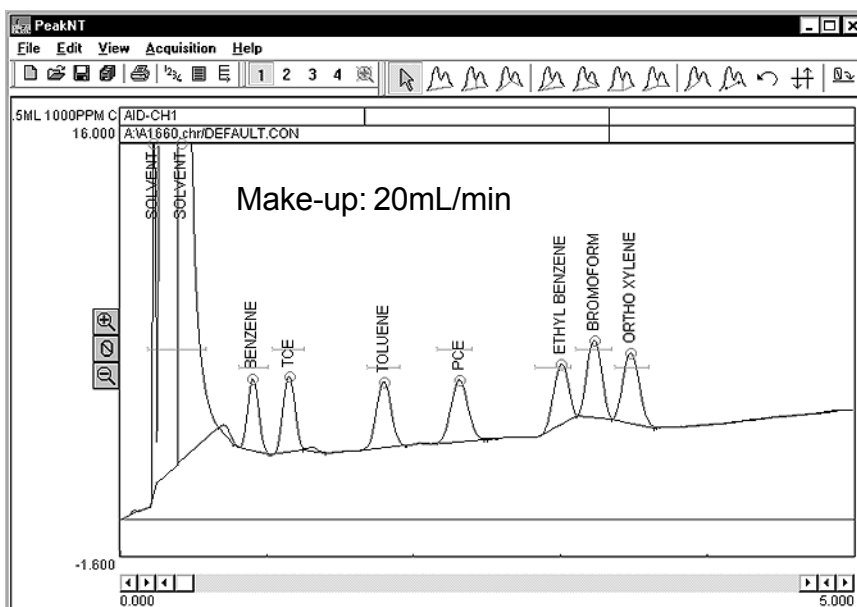
The following chromatograms were produced by an SRI HID equipped GC. Excepting the make-up gas flows, all run conditions are identical. The first chromatogram resulted from a make-up gas flow of 20mL/min. Drastically different in appearance from the first, the second chromatogram was produced with a make-up gas flow of 10mL/min. In the absence of sufficient make-up gas flow, the chlorinated peaks are negative. Not every HID has the same optimum make-up flow; experiment with different flow rates until you find the best range for your detector.

Sample: 0.5mL 1000ppm C₁-C₆
 Column: 30m MXT1-5
 Carrier: Helium @ 10mL/min

Temperature program:
 Initial Hold Ramp Final
 50°C 1.00 10.00 140°C

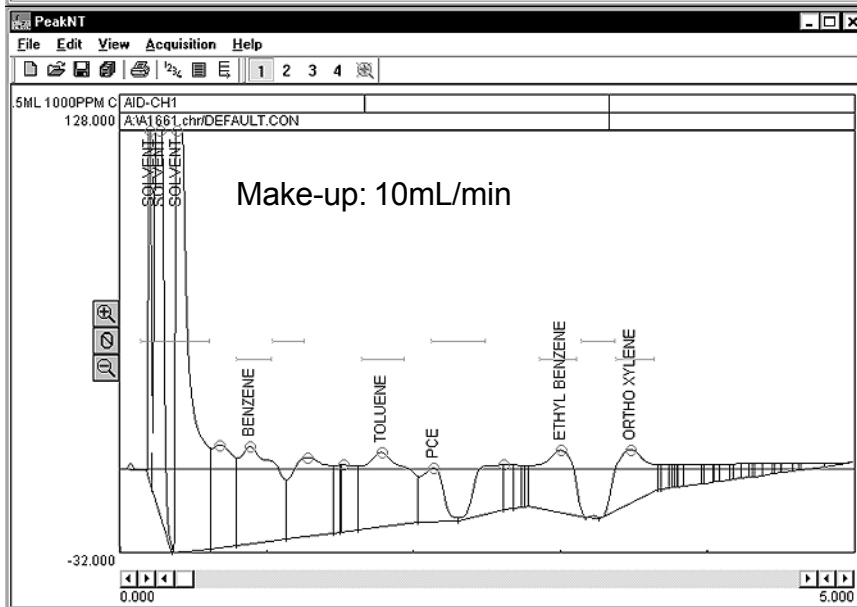
Results:

Component	Retention	Area
Solvent	0.305	4791.9566
Benzene	0.896	14.5888
TCE	1.145	17.9614
Toluene	1.790	19.6294
PCE	2.305	21.3786
Ethyl Benzene	2.998	23.5176
Bromoform	3.221	22.0414
Ortho Xylene	3.470	26.3280
Total:		4937.4018



Results:

Component	Retention	Area
Solvent	0.381	1771.5762
Benzene	0.876	622.0096
TCE	1.266	527.2432
Toluene	1.771	571.1129
Ethyl Benzene	2.993	379.2581
Ortho Xylene	3.468	312.9010
Total:		4184.1010

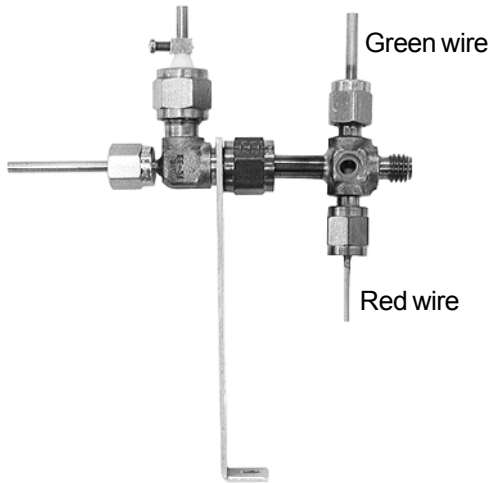


DETECTORS

HID - Helium Ionization Detector

Cleaning the HID

If your HID baseline seems noisy, try cleaning the electrodes following the steps below. Over time, the HID electrodes can develop a coating of soot, which can cause the arc to flicker or change position, resulting in sudden baseline jumps.



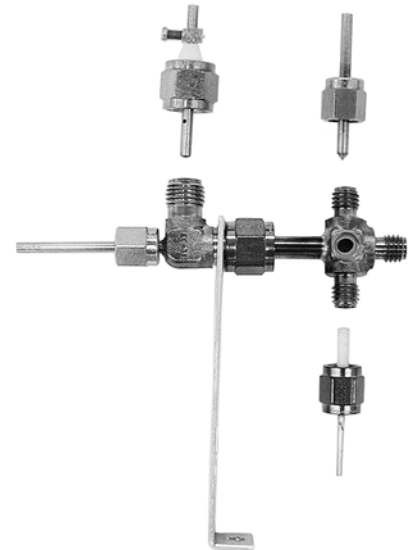
1. Unclip the amplifier lead and slide it off the collector electrode. Unclip and remove the leads from the pointed and flat electrodes (note that the green wire is connected to the pointed electrode, and the red wire is connected to the flat electrode).

2. Remove the the arc and ground electrodes by loosening the 1/8" fittings that hold the electrodes in the arc cross.

3. Remove the collector electrode by loosening the 1/4" fitting that secures it in the detector body.

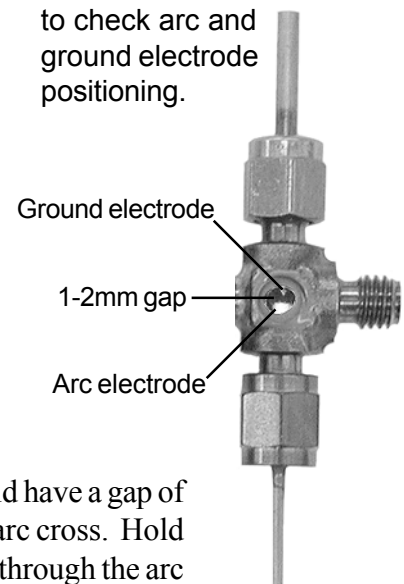
4. Use a piece of 100-400 grain sandpaper to clean the surface of the collector electrode and the point of the ground electrode. Sand the tip of the arc electrode so that it is flush against the ceramic insulation, and to remove any residue. While handling the electrodes, try to minimize hand contact by holding them with a clean paper towel.

5. Remove any sanding residue from the electrodes using a paper towel optionally moistened with methanol or another quick-evaporating solvent.



6. Replace the electrodes and check for proper alignment. The collector electrode should extend about 4mm into the detector body. An existing screw clamp stop on the collector electrode should allow replacement without readjustment. Should adjustment be required, loosen the screw clamp to position the electrode, then tighten it to hold the position. To position the arc

Use the arc window to check arc and ground electrode positioning.



and ground electrodes, remove the arc cross from the detector body by loosening the 1/4" fitting connecting the two parts of the detector (this fitting also secures the support brace). The ground and arc electrodes should have a gap of about 1-2mm (0.040-0.080") between them, with the gap centered in the arc cross. Hold the arc cross up to the light and verify the electrodes' positions by looking through the arc window. Once the electrodes are positioned, tighten them securely with a wrench.

